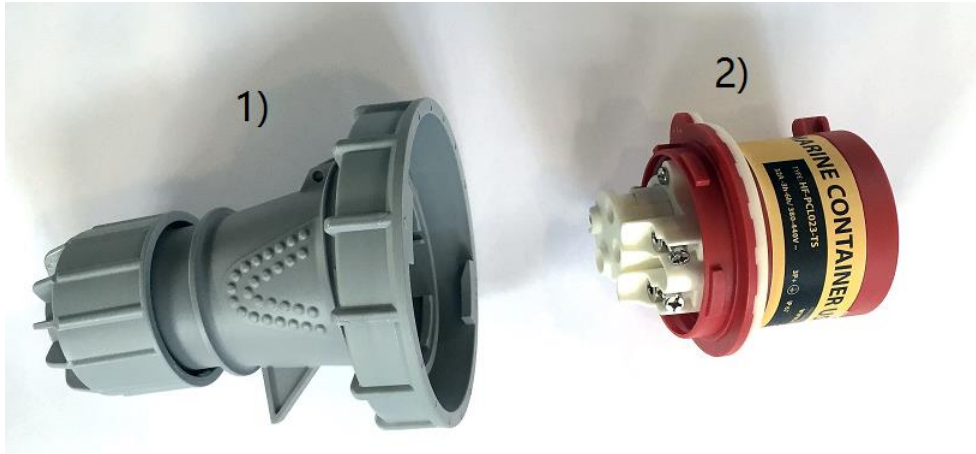


Installation Instructions

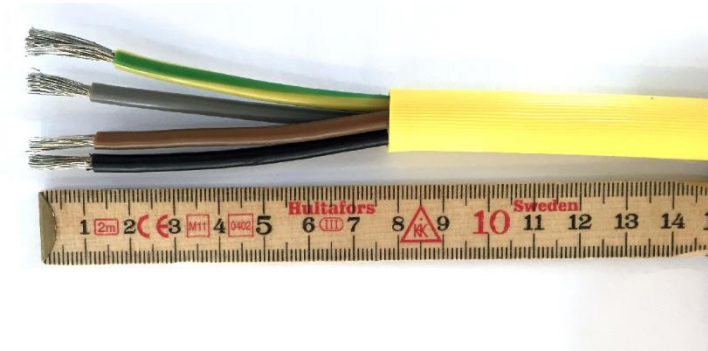
IMPORTANT: To obtain a proper seal of the plug on the cable, outer jacket must be clean and free from oil and grease before installation

1. Unpack and disassemble the plug into 2 parts



1) Cable holder; 2) Connector body

2. Prepare the cable



Remove 78 mm of the cable outer sheath

Remove 17mm of the wire insulation for the earth wire

Remove 14mm of the black, brown and grey wire insulation

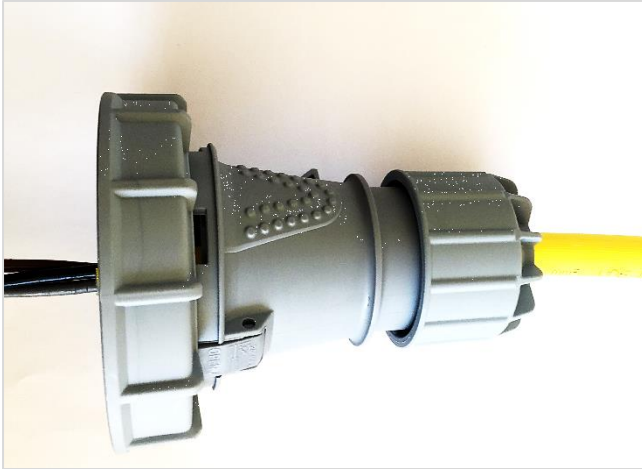


It is recommended to use crimp/ferrule terminals on all wire cores

HF-PCL023-TS Plug

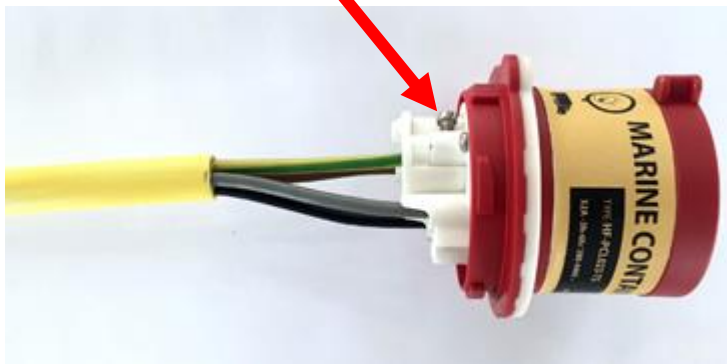
For use with the following cable sizes:
4G2.5mm², 4G4mm², 4G6mm², AWG 11/4, and AWG 10/4

3. Pass the cable through the cable holder



4. Connect the cable to the connector body

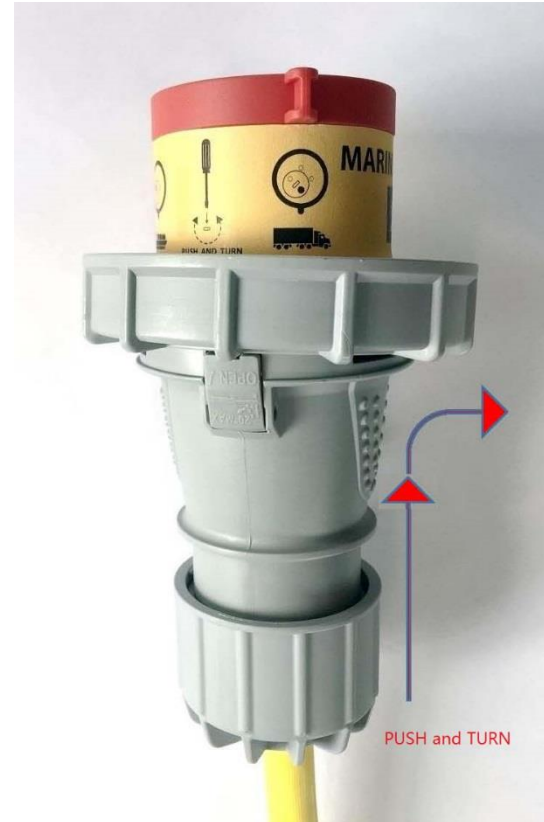
Fasten the screws min. 1.2 Nm.



Be aware of the earth wire

Make sure the wires do not cross!

5. Install the cable holder



Note the position to PUSH!

HF-PCL023-TS Plug

For use with the following cable sizes:
4G2.5mm², 4G4mm², 4G6mm², AWG 11/4, and AWG 10/4

6. Lock the cable holder



7. Fasten the cable gland to finish the installation



Fasten the cable gland min. 5Nm.

HF-PCL023-TS Plug

For use with the following cable sizes:
4G2.5mm², 4G4mm², 4G6mm², AWG 11/4, and AWG 10/4

8. Using the plug with 2 different earth pin options.

The earth pin can rotate between 3H to 6H, by using a standard flat blade screwdriver.

